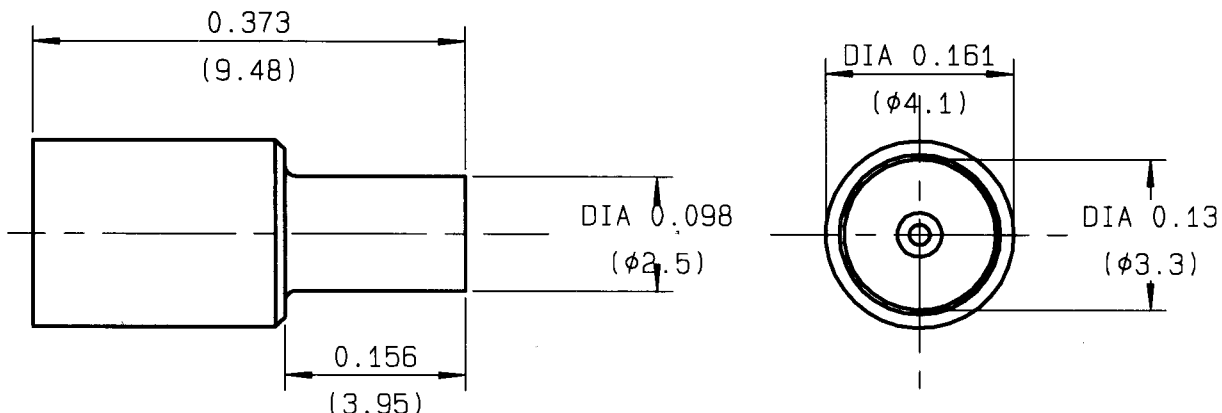


STRAIGHT PLUG , CRIMP TYPE
CABLE 2/50 SINGLE BRAID

SERIES: MMS

1 / 1



WEIGHT 0 oz (- g) CABLES : -
Sca. 6

CHARACTERISTICS

NOMINAL IMPEDANCE	50 Ω
FREQUENCY RANGE	0-2 GHz
TEMPERATURE RATINGS	-40/+125 °C
VSWR	1.2 Max
RF INSERTION LOSS	0.2 F dB Maxi
VOLTAGE RATING	50 Vrms Maxi
DIELECTRIC WITHSTANDING VOLTAGE	250 Vrms mini
INSULATION RESISTANCE	500 MΩ mini
HERMETIC SEAL	- cc/s
LEAKAGE (pressurized only)	NA Atm.cm3/s
-	NA psi
-	NA MPa

STANDARDISATION

CABLE RETENTION	3.38 15	lb mini N
CENTER CONTACT RETENTION		
Axial force - mating end		0 1b mini N
Axial force - opposite end		0 1b mini N
Torque (Min)		0 1b mini N
RECOMMENDED TORQUES		
Mating		0 1b mini N
Panel nut		0 1b mini N
Clamp nut		0 1b mini N

CONSTRUCTION

CONNECTOR PARTS	MATERIALS	FINISH
BODY	BRASS	NICKEL
OUTER CONTACT	BRASS	NICKEL
CENTER CONTACT	BRASS	NICKEL
INSULATOR	PTFE	-
-	-	-
-	-	-
-	-	-
-	-	-
-	-	-

ISSUE	REVISION No	DESCRIPTION	BY	DATE
9913	99-02-019	-40/+90 -> -40/+125	TRIPIER	30-03-99

Initiated on 23-JUL-92
Superseded on - - - -
The information given here is subject to change without notice. Design changes may be in order to improve the product.

